

Your Plenty Valley routes

| Route | Route name |
|-----------|---|
| 381 | Mernda Station to Diamond Creek Station via Doreen <i>(Previously Diamond Creek to South Morang Station)</i> |
| 382 | Whittlesea to Northland SC |
| 383 | Palisades to University Hill |
| 384 | Kinglake to Whittlesea via Humevale |
| 385 | Whittlesea/Mernda Station to Greensborough <i>(Previously Whittlesea/Mernda North to Greensborough)</i> |
| 386 | Mernda Station to Bundoora RMIT via Cravens Rd and South Morang <i>(Previously Mernda North to Bundoora RMIT via Cravens Rd and South Morang)</i> |
| 387 | Mernda Station to Bundoora RMIT via Hawkstowe Pde <i>(Previously Mernda North to Bundoora RMIT via Hawkstowe Pde and South Morang)</i> |
| New route | Route name |
| 388 | Mernda Station to Mernda Station via Doreen <i>(anti-clockwise)</i> |
| 389 | Mernda Station to Mernda Station via Doreen <i>(clockwise)</i> |

The new Route 388 and 389 loop services will go around Mernda and Doreen linking Laurimar Town Centre, Mernda Village Shopping Centre and Mernda Station.



Routes 385, 388 and 389 will have a minor route change in Mernda and Doreen while works on Wallaroo Way and Painted Hills Road are finished. Once works are completed, routes 385, 388 and 389 will travel along the new routes as planned.

The find out more visit ptv.vic.gov.au

For more information visit ptv.vic.gov.au or call 1800 800 007.

If you are deaf, or have a hearing or speech impairment, you can contact us directly or through the National Relay Service and request to call 1800 800 007.



For information in other languages:

| | | | |
|----------|-----------|---------|-----------|
| 普通話 | 9321 5454 | 廣東話 | 9321 5441 |
| Italiano | 9321 5444 | ਪੰਜਾਬੀ | 9321 5445 |
| Ελληνικά | 9321 5443 | हिन्दी | 9321 5442 |
| Việt-ngữ | 9321 5449 | සිංහල | 9321 5446 |
| عربي | 9321 5440 | Español | 9321 5447 |

If your language isn't listed visit ptv.vic.gov.au/languages or call 9321 5450.

Authorised by Transport for Victoria, 1 Spring Street, Melbourne.

Bus, meet train.

From Sunday 26 August we're changing the Plenty Valley bus network, connecting you to three new stations on the Mernda Line.



PTVH2902/18

From Sunday 26 August, we're changing the Plenty Valley bus network to give you better connections with trains on the new Mernda Line.

Buses will connect to three new stations at Middle Gorge, Hawkstowe and Mernda, with close to a thousand train services running each week.

What's changing?

- New route 388 and 389 loop services added, connecting you to Mernda and Doreen
- New timetables
- Bus routes
- Route names
- Stop locations

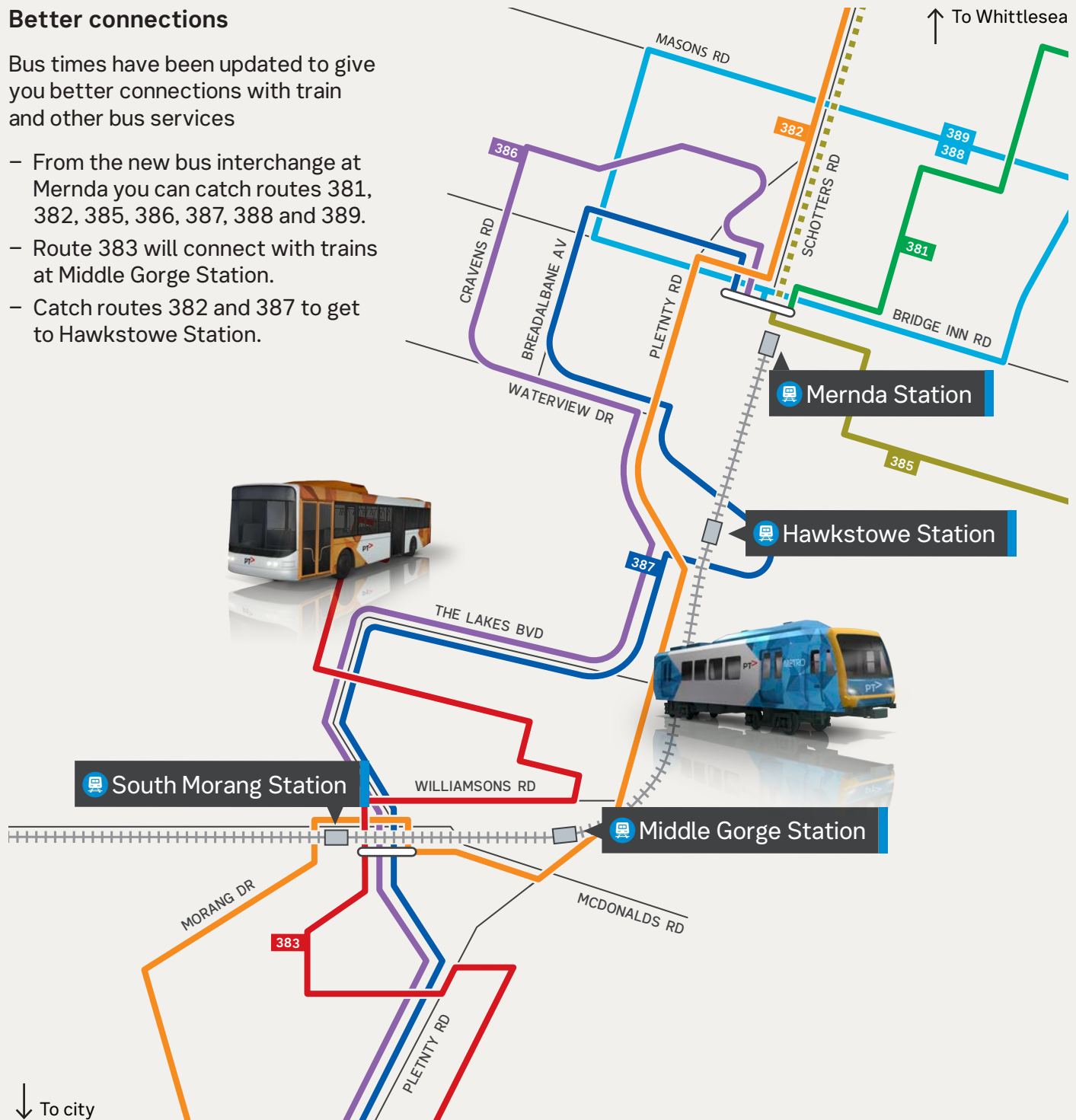


Some routes have changed. Use the network map in this brochure to find the most suitable route for you or plan your journey at ptv.vic.gov.au

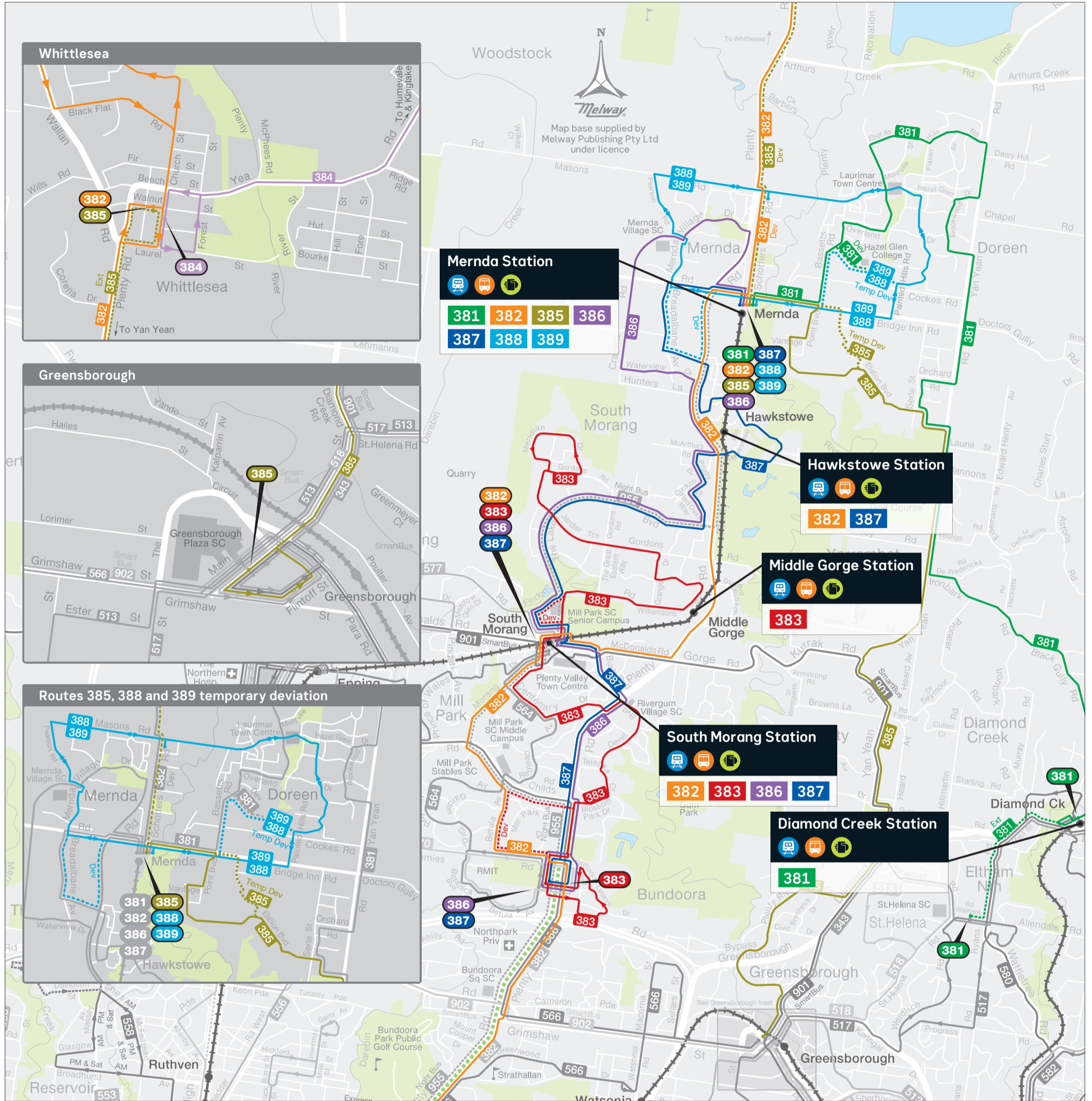
Better connections

Bus times have been updated to give you better connections with train and other bus services

- From the new bus interchange at Mernda you can catch routes 381, 382, 385, 386, 387, 388 and 389.
- Route 383 will connect with trains at Middle Gorge Station.
- Catch routes 382 and 387 to get to Hawkstowe Station.



New Plenty Valley bus network map from Sunday 26 August 2018



MAP NOT TO SCALE
© Public Transport Victoria 2018



The Plenty Valley routes

| Route | Description |
|------------|--|
| 381 | Mernda Station to Diamond Creek Station via Doreen <i>(Previously South Morang Station to Diamond Creek Station via Doreen)</i> |
| 382 | Whittlesea to Northland SC |
| 383 | Palisades to University Hill |
| 384 | Kinglake to Whittlesea via Humevale |
| 385 | Whittlesea/Mernda Station to Greensborough <i>(Previously Whittlesea/Mernda North to Greensborough)</i> |

| Route | Description |
|------------------|--|
| 386 | Mernda Station to Bundoora RMIT via Cravens Rd and South Morang <i>(Previously Mernda North to Bundoora RMIT via Cravens Rd and South Morang)</i> |
| 387 | Mernda Station to Bundoora RMIT via Hawkstowe Pde <i>(Previously Mernda North to Bundoora RMIT via Hawkstowe Pde and South Morang)</i> |
| New route | |
| 388 | Mernda Station to Mernda Station via Doreen <i>(anti-clockwise)</i> |
| 389 | Mernda Station to Mernda Station via Doreen <i>(clockwise)</i> |

Key

- Bus route
- 381** Route number
- Train line
- Route 385 temporary deviation (26th August until further notice)
- Route 388/389 temporary deviation (26th August until further notice)
- Train connection
- Bus connection
- myki tickets available